

Sumilarv® 0.5G

Sumilarv® 0.5G is an insect growth regulator that prevents emergence of adult mosquitoes by disrupting development at the pupal stage. This sand granule formulation allows for flexible dosing applications, and the granules stay where they are placed, remaining effective through rain and temperature changes.

- Up to 150-day residual activity in catch basins
- Controlled release insect growth regulator that breaks the mosquito life cycle
- Non-flushing active adheres to concrete and organic debris
- Remains effective in areas that dry and rewet



PRODUCT SPECIFICATIONS

Key Target Pest(s)	Mosquitoes, including <i>Aedes</i> , <i>Anopheles</i> , and <i>Culex</i> spp.
Signal Word	Caution
Form	Granular
Active Ingredient(s)	Pyriproxyfen
Class of Chemistry	Juvenile hormone receptor modulator (7C)
Activity	IGR, residual
Mode of Action	Disrupt and prevent metamorphosis
Stability	Not applicable – sand granule
Flammability	Not listed as flammable or combustible
Odor	Slight
PPE Requirements	None listed
Maximum Yearly Application Rate	20lb Sumilarv 0.5G/Acre/Year
Mix or Dilute In	Ready to use
Shelf Life	3 years

Packaging

- 1kg unit (10 per case)
- 5kg unit (2 per case)

Use Sites

Catch basins

Temporary/Permanent Water Holding Sites

- Ornamental ponds
- Landfills
- Waste water impoundments
- Salvage yards
- Manmade depressions

Natural/Artificial Water Holding Containers

- Tires
- Potted plants
- Hollow trees and tree holes
- Bird baths
- Flooded roof tops

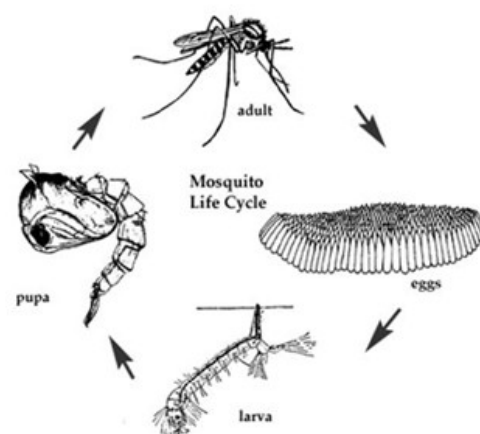
Livestock Areas

- Animal waste lagoons
- Livestock runoff lagoons



Sumilarv 0.5G Tips and Tricks From the MGK Technical Department

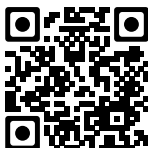
- Calculate the size and water volume of treatment area prior to application.
- The active ingredient in Sumilarv 0.5G affects different life stages. Eggs exposed to pyriproxyfen are less likely to hatch and immature mosquitoes will not develop past the pupal stage. The presence of actively swimming larvae after Sumilarv 0.5G application is normal.
- When applying to manure lagoons, ornamental ponds and similar sites, apply Sumilarv 0.5G along the edges where mosquitoes are more likely to congregate.
- For best results, use Sumilarv 0.5G as part of an integrated pest management program to control the targeted pest and the diseases they vector.



Application Rates

Water Holding Sites/Containers		
Volume of Water (Gallons)	Water Depth (ft) Less Than or Equal To	Amount of Sumilarv 0.5G (Grams)
0-500	1	25
500-1500	2	50
1500-3000	4	75
3000-4500	6	100
4500-6000	8	125
Catch Basins		
Amount of Sumilarv 0.5G (Grams)		
25-75		

SCAN ME



Scan QR code or visit
mgk.com/sumilarv
to see resources and
additional information

Always read and follow all label instructions.

For any medical or safety questions, concerns, or incident reports, call 1-888-740-8712.