



## PEST IDENTIFICATION & TREATMENT

### ANT SPECIES

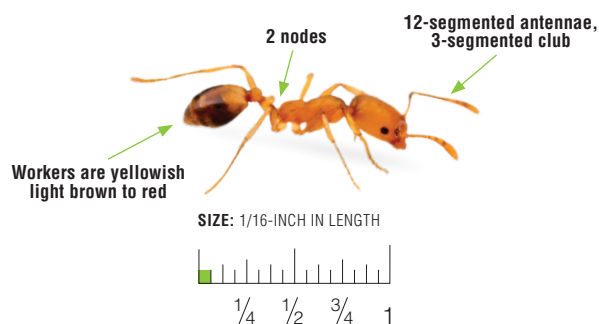
# Pharaoh Ant Protocol



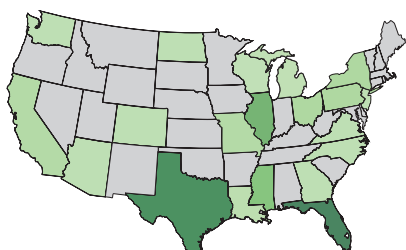
## Understanding Pharaoh Ants

- Pharaoh ants nest almost exclusively indoors in the United States and are found in every state except Alaska.
- Colonies range from small fragments with a few hundred workers to large colonies with hundreds of thousands of workers with hundreds of queens and numerous satellite nests.
- Pharaoh ants prefer warm, humid areas near moisture, including behind wall voids and baseboards near hot water heaters, sinks and appliances.
- Pharaoh ants are notorious for their ability to “bud” or split into satellite colonies when disturbed; DO NOT use repellent liquids or dusts when treating to avoid this behavior.

## Identification



## Range



Not Reported Low Abundance Abundant

Data Sources: iNaturalist & iDigBio

## Inspection

- Pharaoh ants require high amounts of moisture.
- Inspect pantries, kitchen and bathroom sinks, dishwashers, washing machines, near pet food, around aquariums, house plants and condensation pans for refrigerator and air conditioning units.
- Be sure to remove electrical outlet and switch plate covers and inspect for trailing ants.

## Customer Communication

Setting appropriate expectations and communicating the importance of customer collaboration increases the likelihood of success. Be sure to communicate what to expect before and after the treatment and any conducive conditions that require remediation. Best results are seen when the technician and the customer work together. Below are some key things to communicate to the customer:

- Stress the importance of sanitation to your customers. Any type of food or food particles can attract ants. Recommend the customer store food in sealed containers.
- Educate customers and let them know that using over-the-counter insect sprays and cleaners will only make the problem worse.

## Pre-Treatment

- Try to remove any alternative food or moisture sources ants might be foraging on. This will greatly enhance bait uptake and lead to better results.
- Be careful not to disturb ants when identifying and removing alternative resources to avoid “budding.”
- Ensure all equipment is clean and in good working condition to avoid product contamination that could negatively impact results.
- Always read and follow label instructions and make sure you have all of the required PPE prior to treatment.



## Treatment / Liquid Applications

Pharaoh ants are most often found indoors.

- **Treatment for pharaoh ants nesting on the interior of structures:** Apart from southern Florida, pharaoh ants are strictly indoor-nesting ants. For ants nesting in structures, apply Sumari<sup>®</sup> Insecticide, after a bait treatment, at a dilution rate of 1 oz. per gallon of water where ants have been active or found trailing. Key areas include under or around baseboards, wall voids, door casings, voids under cabinets, around dishwashers, washing machines and refrigerators.
- **Treatment for pharaoh ants nesting on the exterior and foraging/trailing into structures (southern Florida only):**
  - **Interior:** Pharaoh ants will trail indoors in search of food and water or during extreme weather conditions. To control ants foraging indoors, apply Sumari<sup>®</sup> Insecticide as a spot or crack and crevice application at a dilution rate of 1 oz. per gallon of water. Key areas include around baseboards, doors, window frames, under sinks, around pipes and attic venting.
  - **Exterior:** Controlling ants outside of the structure is key to preventing indoor infestations. Apply Sumari<sup>®</sup> Insecticide at a dilution rate of 2 oz. per gallon of water for residual control treatments around the perimeter of a structure. Key areas include entryways, doors and windows, utility entry points, behind siding, weep holes, eaves, around lights and garbage cans. Use broadcast or spot and/or crack and crevice applications anywhere ants are found trailing. Curative or proactive broadcast treatments can be made to yards, lawns, fields, parks and landscaping.
- **Treatment for pharaoh ants found only on the exterior of structures (southern Florida only):** For ants foraging/ nesting in lawns or around the structure, apply Sumari<sup>®</sup> Insecticide as a proactive broadcast treatment, spot and/or crack and crevice application at a dilution rate of 2 oz. per gallon of water directly to nests or trails.

## Treatment / Baiting Applications

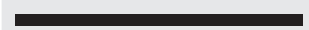
Pharaoh ants are most often found indoors.

- **Treatment for pharaoh ants nesting in structures (interior bait treatments only):** Baiting is *the most effective way to eliminate Pharaoh ants* and prevent them from "budding". Baiting should be performed prior to liquid applications. Apply Sumari<sup>®</sup> Ant Gel Bait in spots 1/8 inch in diameter or in lines 1/8 inch by 3 inches in length wherever active foraging ants are found. Key areas include around or under baseboards and door casing, into voids under cabinets, around dishwashers, washing machines, refrigerators, behind electrical outlet/switch plate covers, or anywhere you see ants trailing.
- **Treatment for exterior pharaoh ant nest locations (southern Florida only):**
  - Bait placement on the interior of the structure to control pharaoh ants should be avoided unless the nest is located on the interior.
  - To bait outdoors, apply Sumari<sup>®</sup> Ant Gel Bait in spots 1/8 inch in diameter or in lines 1/8 inch by 3 inches in length anywhere you see ants trailing. Common areas include the base of trees, visual trails, weep holes and other entry points around the structure.

1/8 bait spot



1/8 x 3 inch bait line



## Post-Treatment

- Re-inspect if ant activity has not ceased after 3-5 days. Make note of any continued activity or foraging, even if ants aren't found on the interior of a structure. Re-treat any areas with such activity to reduce the likelihood of re-infestation.

## Tips and Tricks from the MGK Technical Department

**Educate your customer.** Homeowners will often treat with over-the-counter products even after you have performed proper treatment. Explain that such action will not only make your baiting program less effective, it can make the problem worse.

**Forget the paradigm "Kill the queen, kill the colony."** With highly polygyne species, there can be hundreds of queens across multiple nests. Affect the most ants possible within the first few days of treatment by using baits and transferable non-repellents together.

**BAIT, BAIT, BAIT.** Once colonies are disturbed and break off into multiple fragments, the time needed to achieve control can go from days to months. Stick to a bait-first approach to save yourself time. Enhance performance of your bait treatments by spot treating near them with a non-repellent liquid concentrate like Sumari<sup>®</sup> Insecticide. The combination of bait and non-repellent will reach deep into the colony.

**Ants can be picky.** At some point, everyone has applied a bait that was ignored by trailing ants. One reason might be the colony fragment is not looking for food but is moving between nesting sites. Try several baits to determine which is most effective.



## Products



### Sumari® Insecticide

- Kills and controls ants, including multi-queen species, for up to three months
- Contains NyGuard® IGR insect growth regulator
- Dual modes of action
- For indoor and outdoor use, including outdoor broadcast
- No signal word
- Apply as an outdoor broadcast treatment up to four times per year at the low rate
- Convenient all-in-one product



### Sumari® Ant Gel Bait

- Kills ants (excluding fire ants and carpenter ants)
- Easy to use



7325 Aspen Ln N  
Minneapolis, MN 55428

TOLL FREE 800.645.6466  
TEL 763.544.0341  
FAX 763.544.6437  
WWW.MGK.COM

Contact Your Local MGK or Distributor  
Sales Rep for More Information

Bookmark MGK.com/Ants to access images, tips and tricks,  
all of our ant protocols and additional ant resources.